

FAIRBANKS[®]

S C A L E S



TUNDRA XL & XLT SERIES

PIT-TYPE TRUCK SCALES

Ideal for highway vehicle and extreme volume weighing applications.

ULTIMATE LOAD CELLS

The Tundra's 66,000 lb. capacity rocker column load cells prevent weighing errors caused by off-center loading and eliminate the need for grout pockets. These cells also boast glass-to-metal connection points for a true hermetic seal, armored stainless steel cabling and corrosion resistant electrochemical polishing.



25 YEAR
LOAD CELL
WARRANTY*

STRENGTH FROM WITHIN

The Tundra utilizes Fairbanks' time-proven, dual main girder design; the industry standard for strength and durability for more than 100 years.



SCALE PIT ACCESS

The Tundra understructure has ample clearance to allow for routine servicing of the scale's electronics and bumper checking system.



ENCAPSULATED ELECTRONICS

Fairbanks is the only scale manufacturer to encapsulate its electronic circuit boards with acrylic epoxy for added protection against moisture intrusion.



INTALOGIX® TECHNOLOGY

This innovative digital technology, available exclusively from Fairbanks, isolates your scale's load cells and guards them against dangerous electrical strikes and power surges.



CC # 94-101

TUNDRA XL AND XLT SERIES PIT-TYPE TRUCK SCALES

THE TUNDRA IS ALL ABOUT SAVINGS

Fairbanks' Tundra Series Truck Scales are rugged, reliable and real estate friendly. The Tundra features time-proven scale engineering and a design that significantly reduces the amount of real estate typically required for scale operations. At the end of the day, customers find the Tundra to be an exceptional cost- and space-saving value, whether they're building a new scale from the ground up or need a factory-built and assembled deck to fit an existing foundation.

- **Concentrated Load Capacity Advantage**

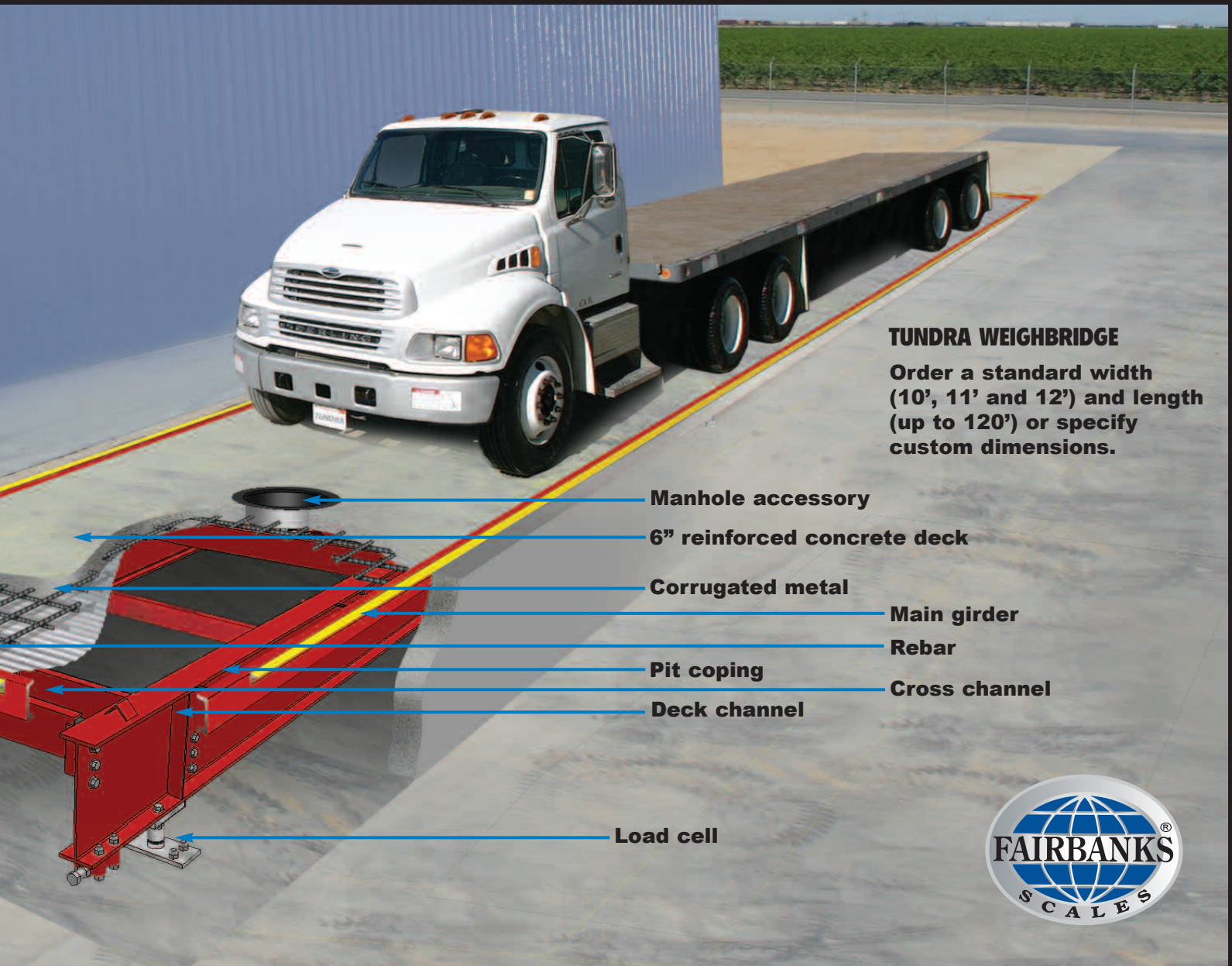
The **Tundra XL** features a 60 k CLC for typical highway vehicle weighing applications.

The **Tundra XLT** features a 100 k CLC for extreme applications.

- **Exclusive Intalogix Technology**

The Tundra Series utilizes Fairbanks' Intalogix Technology to achieve the industry's greatest lightning and surge protection, as well as superior load cell diagnostics.

*Contact your Fairbanks Representative for warranty details.



TUNDRA WEIGHBRIDGE

Order a standard width (10', 11' and 12') and length (up to 120') or specify custom dimensions.

Manhole accessory

6" reinforced concrete deck

Corrugated metal

Main girder

Rebar

Pit coping

Cross channel

Deck channel

Load cell



TUNDRA XL AND XLT FEATURES

WEIGHBRIDGE

- Capacity range of 45 to 135 tons.
- Field pour concrete deck (optional factory poured deck or steel deck).
- Long-lasting, time proven dual main girder design.
- Easy manhole access to the scale pit for routine maintenance.
- Unique bumper checking system that solves side-to-side and end-to-end checking and allows for a free floating deck.
- Wear resistant, acrylic urethane industrial coating system.

ROCKER COLUMN LOAD CELLS

- 4.66" electrochemically polished stainless steel with the ultimate in load cell capacity (66K) and 300 percent overload protection.
- True hermetic seal ensures this cell is impervious to moisture.
- Stainless steel sheathing protects cables from rodents and fraying.



Tundra's end-dump option is the only NTEP certified end-dump available for replacement or new installations.

TUNDRA XL & XLT SERIES

PIT-TYPE TRUCK SCALES

Weighing Solutions for the World Since 1830

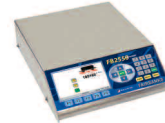
Fairbanks.com

SPECIFICATIONS

Capacities	45 ton to 135 ton (XL) 60 ton to 135 ton (XLT)
CLC	60 k (XL) 100 k (XLT)
Platform sizes	
Lengths	10' to 120' standard Custom lengths available
Widths	10', 11' and 12' standard
Minimum division size	10 lbs
Sections	2 to 7
Deck data:	
Design	Dual main girders
Construction	Field pour
Checking	Bumper
Approvals	NTEP CC# 94-101, MC# AM-4949
Load cell:	
Height	4.66"
Capacity	66,000 lbs
Type	Rocker column
Sealing	Welded, hermetically sealed, gas filled
Material	Element - 420 Can - 304
Rating	IP69K
Resistance	1,000 ohms
Output	2.4 mV/V
Excitation	4 to 24 VDC
Ultimate overload	300%
Cable length	15'
Cable protection	Stainless steel braid ArmourGuard
Approvals	NTEP CC# 14-024, Factory Mutual, CE, OIML R60/2000-DE-08.11

ACCESSORIES

Scale Instruments



Traffic Signals



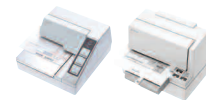
Custom software



Remote Displays



Ticket printers



Driver Assist Terminals



OPTIONS

- Blow-down plates
- Custom sizes
- Dump through deck
- Factory poured concrete deck
- Galvanized weighbridge
- Guide post kits
- Intrinsically safe electronics
- Load cell riser plates
- Manholes (round)
- NTEP approved end-dump
- Rebar mat kits
- Steel deck

Your Fairbanks Scales Authorized Representative is:

Call toll-free for the representative nearest you:

(800) 451-4107

Call between 8:00 a.m. – 5:00 p.m. Central Time

Corporate Offices: 821 Locust • Kansas City, MO 64106 • (816) 471-0231

Internet Address: <http://www.Fairbanks.com>

